



## MOUNTING INSTRUCTIONS

# **DEIF switchboard instruments**

Guidelines for mounting and tightening torques

## Mounting instructions

If the mounting instructions are not followed, then the DEIF A/S warranty is void.

These instructions are for DEIF switchboard products unless the data sheet or product-specific documents tell you differently.

## Fuse recommendations

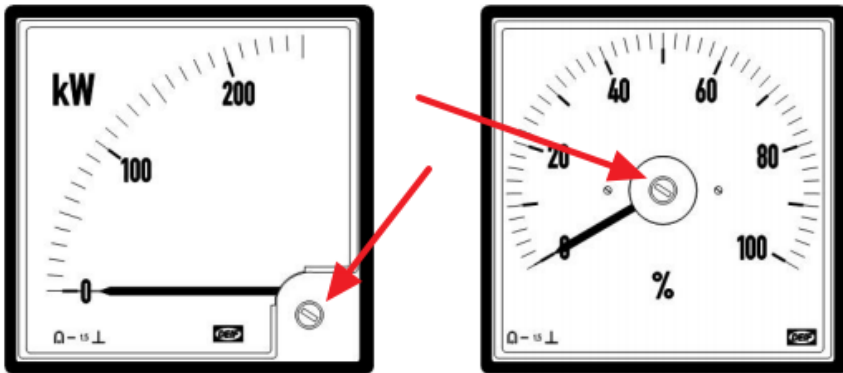
Use fuses before the products in the switchboard on the individual product or in logical groups.

Design the fuses from the related voltages and the number of products. The fuses are selected by the switchboard designer.


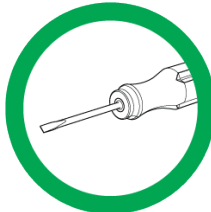
## Zero adjustment of point meters

During transport and handling, small changes in zero setting are not unusual. It is good practice to zero-adjust the meter prior to testing and after the final installation.

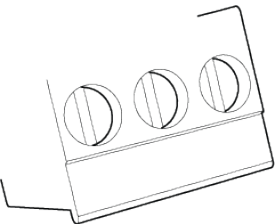
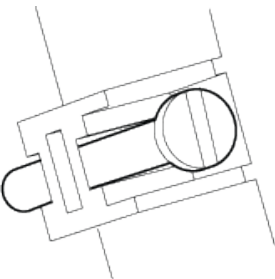
**Note:** Zero adjustment of c-models in the range 4-20 mA is not possible. For x-models in the same range zero adjustment can be done when a current is supplied.



## Tools

	Do not use electric screwdrivers.
	Use the screwdriver very carefully.

## Tightening torques

	<b>General:</b> For terminals: Max. 0.5 Nm  <b>MTR-3/4:</b> For terminals: 0.8 Nm recommended  <b>Current transformers:</b> For terminals, secondary side: Max. 2 Nm
	For mounting screws: Max. 0.5 Nm.